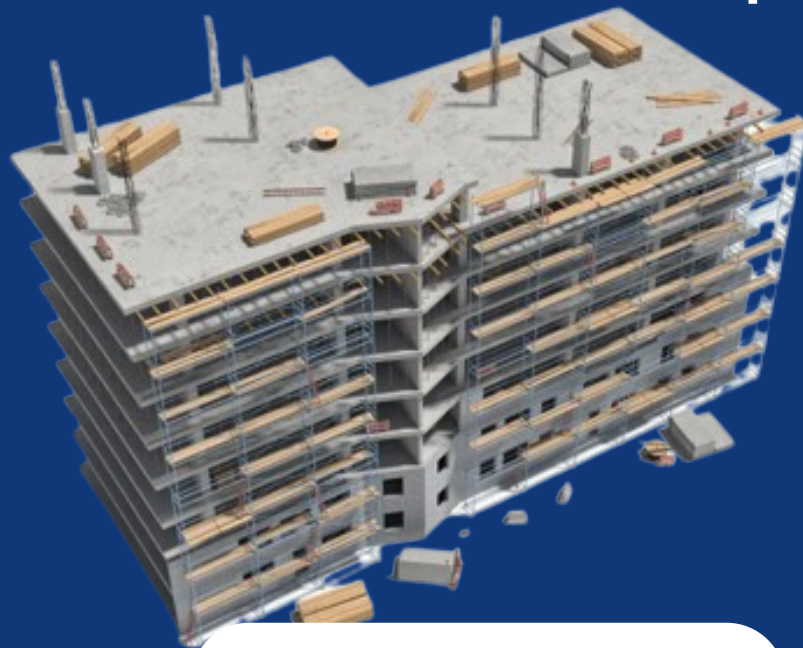




REVIT FOR STRUCTURAL DESIGN

2024



By: Ilearn Academy

www.ilearntc.com

Revit for Structural Design

Overview:

- Learn the typical workflow and features of Revit, including modeling, materials, families, documentation, views, and project management. Get key skills for structural design that help you model foundations, frames, walls, columns, and stairs.
- Practice using exam topics such as family categories and types, phases and design options, and worksharing. Follow along with lessons, datasets, and exercises to practice and review the exam topics on your own. You can also test your knowledge by taking a practice test to prepare for the certification exam. It's all about practice and preparation.

Training:

- Work with structural components, selection sets, and element materials.
- Create and manage views and annotations, work with revisions, and set up and manage sheets.
- Use workflows and processes such as worksharing, phasing, design options, and project management.
- Review the topics covered on the Autodesk Certified Professional in Revit for Structural Design exam.

Audience Profile :

Who should enroll

- Structural / Civil Engineers or Draftmen
- Structural / Civil Students and Fresh Graduate

Prerequisites:

- No Experience required in any software

Why Learn Revit for Structural Design ?

Revit Structure helps to improve multi discipline coordination of Structural Design Documentation, Minimize Errors, and enhance collaboration between Structural Engineers and extended Project Team Members, such as Architects, MEP Engineers, and Owners. Features: Integrates Physical and Analytical structural models

Training Solutions:

- Offline Classroom Instructor-Led Training in our labs or onsite Locations.
- Virtual Instructor-Led Training Via
- Virtual Video Conferencing Tools.

Why Learners Prefer iLearn as their Training Services provider ?

- Premium Training Services Accredited from Global Technology Vendors.
- Best Rated Experts & Certified Trainers in Egypt.
- Official Training Hours, Practice Labs, Hands-on Learning.
- iLearn Classrooms are designed with High Edge PCs and Training Facilities.
- Return on Training Investment is Guaranteed to boost performance.



Revit for Structural Design

Revit for Structural Design Course Outline :

Getting Started

- Course overview
- Get the software

See where you stand

Starting a structural project

- Link or import files
- Understand the concept of copy and monitor elements from a linked file
- Create additional grids and levels
- Create a site file and understand shared coordinates

Working with structural components part 1

- Working with structural columns
- Working with structural walls Part 1
- Working with structural walls Part 2
- Working with structural floors Part 1
- Working with structural floors Part 2
- Working with structural framing Part 1
- Working with structural framing Part 2
- Working with structural framing Part 3
- Working with structural connections

Working with structural components part 2

- Working with stairs
- Working with foundations Part 1
- Working with foundations Part 2
- Working with reinforcement tools - Part 1
- Working with reinforcement tools Part 2
- Working with reinforcement tools - Part 3
- Working with reinforcement tools Part 4
- Working with reinforcement tools -Part 5
- Working with reinforcement tools - Part 6
- Working with selection sets
- Using and modifying element materials

Content creation and management

- Manage family categories and types
- Creating family content
- Create a type catalog

Working with views and annotations

- Creating and managing callout views
- Creating and using detail components
- Duplicating views Part 1
- Duplicating views part 2
- Creating a site plan
- Developing and customizing schedules
- Creating and modifying annotation families for documentation

Revision and sheet management

- Working with revisions
- Setting up and managing sheets

Collaboration and project management

- Working with phases
- Working with design options
- Using worksharing features
- Assessing and reviewing warnings in Revit
- Configuring export and print settings

Why Learn Revit for Structural Design ?

Revit Structure helps to improve multi discipline coordination of Structural Design Documentation, Minimize Errors, and enhance collaboration between Structural Engineers and extended Project Team Members, such as Architects, MEP Engineers, and Owners. Features: Integrates Physical and Analytical structural models

Training Solutions:

- Offline Classroom Instructor-Led Training in our labs or onsite Locations.
- Virtual Instructor-Led Training Via
- Virtual Video Conferencing Tools.

Why Learners Prefer iLearn as their Training Services provider ?

- Premium Training Services Accredited from Global Technology Vendors.
- Best Rated Experts & Certified Trainers in Egypt.
- Official Training Hours, Practice Labs, Hands-on Learning.
- iLearn Classrooms are designed with High Edge PCs and Training Facilities.
- Return on Training Investment is Guaranteed to boost performance.

Contact Us

**WE LOOK FORWARD
TO WORKING WITH YOU**



**KSA : +966594488106 -
Cairo: +20 1229930880
+20 1271017637 - +20 1097898119**



info@ilearntc.com



www.ilearntc.com



Cairo, Jaddah, ElRiyadh



Ilearnaca



ILearn.Official



Ilearn Academy for Training & Consulting

**Bank Account Number: 00086 - 20310495643-62
IBAN: EG030037008608182031049564362**

Tax card : 472899228

Commercial Record : 79427